

SWISSVOICE

D28

Quick user guide

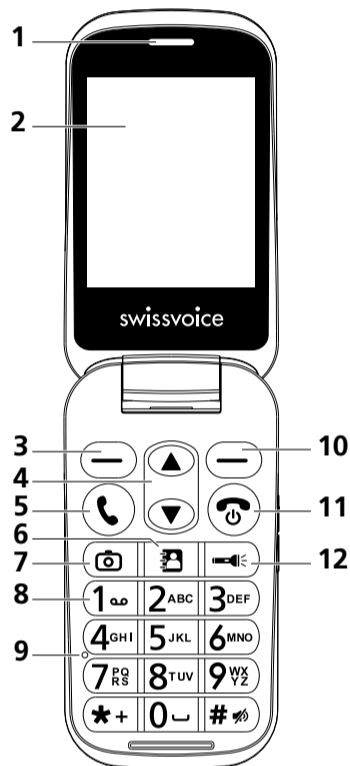
INTRODUCTION

D28 is an extraordinary 2G clam shell phone with dual display (E-paper Always-On external display, user can no longer miss the key information)

D28 is a CARE PHONE with features :

- M4/T4 HAC level
- Loud speaker
- 2M pixel camera
- Built-in large memory
- Talking dialing digits
- Easy charging base
- Talking caller ID name
- Photo speed dial
- SOS button
- SwissVoice Care features

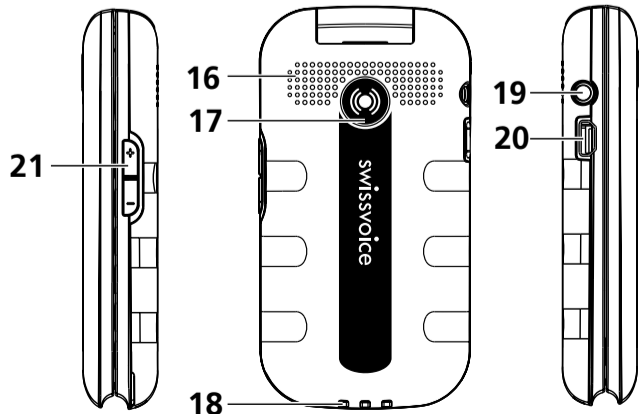
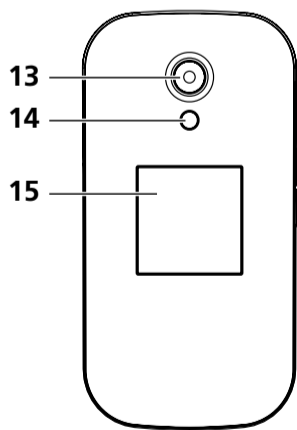
KEYS DESCRIPTION



- 1 - Earpiece
- 2 - Main display
- 3 - Left selection key
- 4 - Navigation key
- 5 - Answer/Call key
- 6 - Photo memory Key
- 7 - Camera Key
- 8 - Dialing keypad
- 9 - Microphone
- 10 - Right selection key
- 11 - End / Power key
- 12 - Torch key

** # is the hot key for switching the keypad input between ABC, Abc, abc & 123.

** *+ is the hot key for entering special symbol.



- 13 - Camera lens
- 14 - Torch LED Flashlight
- 15 - Front display
- 16 - Loudspeaker
- 17 - SOS key
- 18 - Charging contacts
- 19 - Headset jack
- 20 - Micro-USB socket
- 21 - Volume control (Hearing, Ringer and Audio Boost)

DISPLAY ICONS

External E-Ink Display

- Battery LOW
- Charging
- Alarm ON
- Battery FULL
- Missed call
- New message

Color Display

- Earpiece amplification ON
- Vibrate then Ring
- Vibrate only
- Silence
- Red - Ring; Green - Ring & Vibrate
- Battery power
- Bluetooth ON
- Roaming
- Headset Plugged in
- Signal strength

Note! All the diagrams are for illustrative purposes. It may be slightly different from the actual unit.

In keeping with our environmental preservation and compliance commitment, we include Quick Start Guide in our packaging. For digital copy of user manual and useful information, please visit our website or contact our Helpline. www.swissvoice.net

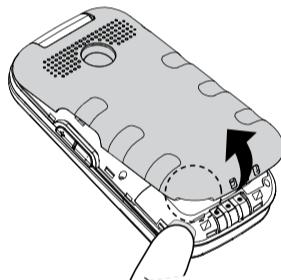
GET STARTED

Installing the SIM card, memory card and battery

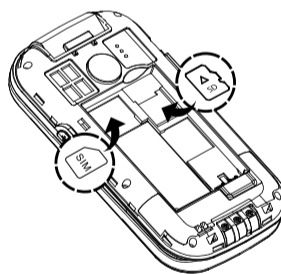
! ATTENTION :

- Risk of swallowing small objects! The SIM card & memory card can be removed. Small children can swallow them.
- Do not bend or scratch the SIM card. Prevent any contact with water, dirt or electrical charges.
- Turn off the phone and disconnect the charger before removing the battery cover.

Remove the battery cover

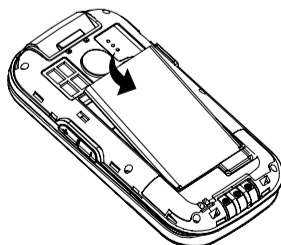


Insert the SIM card (required) and the memory card (optional)



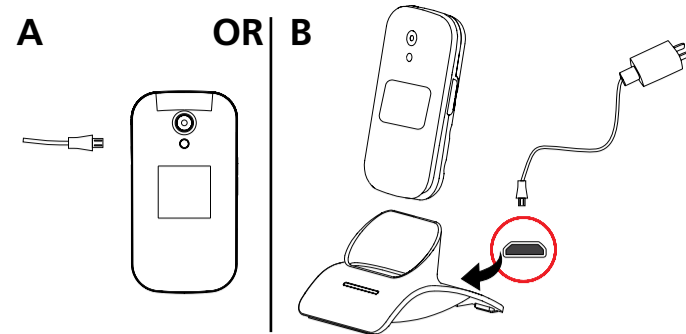
- Place the SIM card in the SIM card holder with the golden contacts facing down. Close the SIM card metal cover and lock it.
- To expand the internal storage memory, you can insert a microSD memory card (maximum capacity of 32 GB / not included). Insert the memory card into the slot until it stops as illustrated.

Insert the battery and replace the battery cover



- Insert the battery into battery compartment with golden contacts of the battery facing downwards to the right of the phone. Press lightly on the top end of the battery until it snaps into place.
- Replace and secure the battery cover until it clicks into place.

Charge the phone



- Connect the USB plug of the adaptor to the charging socket (A) or place the device in the cradle (B).

! ATTENTION:

- Only use battery, charger and accessories that have been approved for using with this particular model. Connecting other accessories may be dangerous and may invalidate the warranty.
- When charging the battery for the first time, it should be charged for at least 4 hours.

1st USE SETUP

- Long press to power up the phone
- to select the desired language > OK
- Input HH:MM > > DD/MM/YYYY > > 12Hr/24Hr > > Save
- (Press Menu > > Settings > Phone > User can modify the detailed settings)

BASIC OPERATION

Turn the Phone ON/OFF

- Long press

Make a Call

- Enter the number 0.....9 (Press Clear to delete)
- Press to dial (Press H-Free for Handsfree. Press H-Held for Handset)
- Press to end the call

Call from phonebook

- Press > to select the 10 photo memory; or Press Names > to select the number
- Press to dial
- Press to end the call

Receive a Call

- Flip up the phone or press to answer
- Press to end the call

Adjust the earpiece Tone frequency

- Press Menu > > Settings > Tone Control....

 1. Normal frequency
 2. Low frequency
 3. High frequency

Adjust the earpiece loudness

- During a call, press to adjust the loudness
- According to your need, it can reach the M4/T4 level

! ATTENTION :

Excessive exposure to loud sounds may cause hearing damage.

Settings (Ring tone & Volume)

- Press Menu > > Settings >
- Under the Settings menu, the following options can also be accessed

 1. Profiles
 2. Phone (Setting Date/Time, Languages,....)
 3. Charger LED (Activate / Deactivate)
 4. Tone Control
 5. Call settings
 6. Security
 7. Restore

- (Press Menu > > Settings > Profiles > General > Customize..... User can select the Ring tone, Volume and others)

CALL Log

- Press Menu > > Call Log >

 1. Missed
 2. Dialed
 3. Received

- Press to select the desired number
- Press to dial out

ADD Phonebook contact

- Press Menu > > Phonebook > > Normal > > Add

 1. Name > input the name
 2. Number > 0...9
 3. Caller ringtone > select ring tone
 4. Options > Save

