

Instruction for use



IMM1021_IFU.Version7.2020-08-20



E-Board L

immedia
by Etac

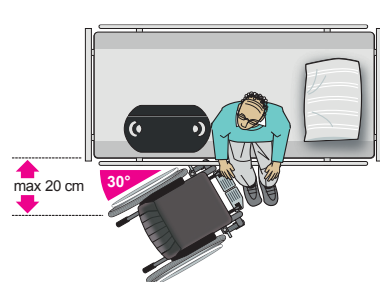
Index

Illustrations	3
User manual - English	4
Bruksanvisning - Svenska.....	9
Bruksanvisning - Norsk	14
Brugervejledning - Dansk.....	19
Käyttöohjeet - Suomi.....	24
Gebrauchsanweisung - Deutsch	29
Gebruiksaanwijzing - Nederlands.....	34
Instruction d'utilisation - Français.....	39
Istruzioni per l'uso - Italiano	44
Instrucciones de uso - Español	49

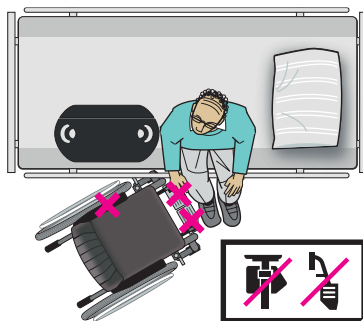
See www.etac.com



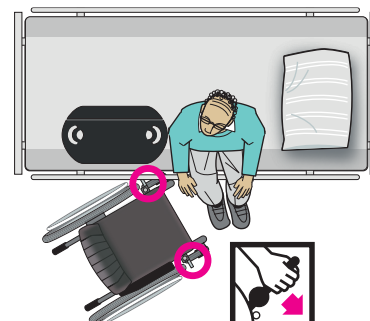
Illustrations



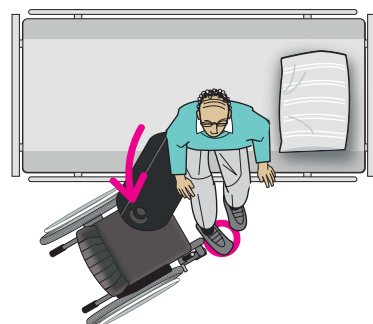
1



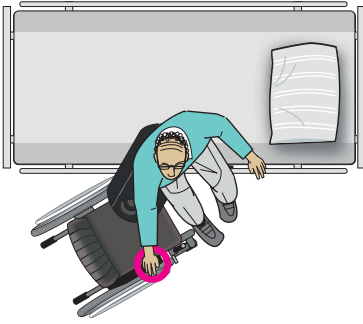
2



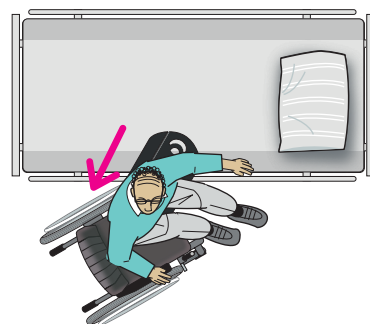
3



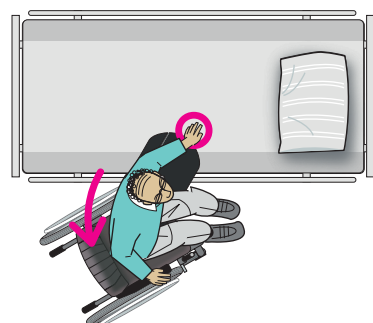
4



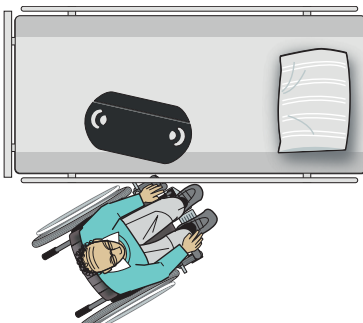
5



6



7



8

ILL.

GB

SV

NO

DA

FI

DE

NL

FR

IT

ES

General

Thank you for choosing an Etac product.

To avoid accidents and injury when moving and handling the products, please read this manual carefully.

The person described as “the user” in this “Instruction for Use” is the person who is lying or sitting on the product. The carers are the people who manoeuvre the product.



This symbol appears alongside the text in the manual. It draws the reader's attention to points at which there may be a risk to the health and safety of the user or carer.

These products comply with the standards applicable for Class 1 products in the Medical Device Regulation (EU) 2017/745 on medical devices.

At Etac we strive to continually improve our products and therefore we reserve the right to make changes to products without prior warning. All measurements given on illustrations and similar material are for guidance only and Etac cannot be held liable for errors and defects.

The information given in this manual, including

recommendations, combinations and sizing, does not apply to special orders and modifications. If the customer makes adjustments, repairs or uses combinations not predetermined by Etac, the Etac CE certification and Etac warranty will not be valid. If in doubt, please contact Etac.

Warranty: Two-year warranty on material and manufacturing defects, provided that the product is used correctly.

Expected lifetime: The device has an expected service life of 1 to 2 years under normal use. The service life of the device varies depending on usage frequency, loads and how often and how it is washed.

For further information on the Etac transfer range, see www.etac.com.

In case of an adverse event occurred in relation to the device, incidents should be reported to your local dealer and the national competent authority in a timely manner. The local dealer will forward information to manufacturer.

Symbols in general



Washing



Disinfect / Wipe off



Warning



Manufacturer



Do not bleach



Never leave on the floor



Production year, month and day



CE -certification



Tumbledry



Risk of sliding down



Batch no./Lot no.



Keep dry



Iron



Keep out of the sun



User mass limit = maximum rated load



Non sterile



Do not dryclean



Read the user manual



The product can be scrapped according to national regulations



Article number



Medical device

Intended use

E-Board can be used to transfer users from wheelchair to bed, bath/commode, car seat, etc. and vice versa.

Intended environment

Acute care, Long-term care, Home care

Practical handling

Positioning

Position the wheelchair at an angle of about 30° to the bed. Position E-Board so that the grey non-slip strips on the back lie securely against the wheelchair seat and the surface of the opposite surface.

Positioning is easier if the user either leans against the direction of movement or shuffles him/herself sideways on the mattress until he/she is seated on the glide board (Illustrations 1-4).

Use

The user can now slide/“shuffle” slowly over into the wheelchair by pushing him/herself away from the mattress (Illustrations 5-7).

Depending on the user’s resources, the carer can guide the user, supporting the upper body, possibly using SupportBelt, SmartMove or Sling.

Tips

If an angle is created (e.g. if the bed is slightly higher than the wheelchair), the user will slide more easily from one to the other.

To remove E-Board, the user moves his/her weight away from the glide board, lifts and then pulls it free (Illustration 8).

In connection with manual handling, it will often be an advantage to use a PediTurn turnplate for the feet and SupportBelt.

Notice

Special features

Always check the product before use and after washing.

Never use a defective product. If the product shows signs of wear-and-tear, it must be scrapped.

Read these instructions carefully.

It is important that carers receive instruction in manual handling. Etac offers advice and training for carers. For further information, contact Etac.

Always use the correct manual handling techniques.

Encourage the user to assist where possible

To ensure that the user feels safe and that every manual handling is smooth, always plan the manual handling in advance.



There is a risk that the user may slide off. Never leave the user alone on the edge of the bed.



Never leave the product on the floor.



Always conduct a risk assessment, and ensure that the assistive product can be used for the individual user and, in combination with other devices, that it is safe for the user and carers.



Never use the product under wet conditions as the underside of the board may become slippery in contact with water.



Remember to apply brakes to lock bed and wheelchair (Illustration 3).

If in any doubt - please contact Etac.

Material and cleaning

Material:

Polyethylene. (HDPE)

The product should be checked regularly, preferably each time it is used.



**Never try to repair a product yourself.
Never use a defective product.**

Washing instructions:

E-Board can be wiped with soapy water or disinfectant. This product can be cleaned with a solvent-free cleaning agent with a pH level between 5 and 9, or a 70% disinfection solution.



Products and accessories

Article no.	Product Description	Size (mm)
IM404	E-Board L	W330xL600xH6
IM405	E-Board XL	W330xL750xH6
IM408	E-Board M	W250xL600xH6
IM410	E-Board S	W200xL450xH6

Combinations

Article no.	Product Description	Size (mm)
IM99836GT	PediTurn Soft	Ø400
IM99700	PediTurn Hard	Ø380
IM8017015	SupportBelt XL	1300-1700
IM8015013	SupportBelt L	1200-1500
IM8013013	SupportBelt M	900-1300
IM8010513	SupportBelt S	650-1050
IM8010509	SupportBelt XS	650-1050
IM8009009	SupportBelt XXS	450-900
IM428	Sling - long	W160xL1900
IM428K	Sling - short	W160xL1200
IM426	SmartMove w/4 handles	W210xL600

Service information

Inspection

First inspection:

- Is the packaging intact?
- Read the label on the packaging and check the article no. and product description
- Check that Short Instruction is enclosed – updated User Manual/Instruction for use can be downloaded from www.etac.com or contact your Etac Customer Service or the local dealer.
- Check the label on the product - does it include article no., product description, lot/batch no., cleaning instructions and supplier name?

Periodic Inspection:

- Make sure that your Manual transfer system always is in a perfect condition.
- After wash – always check materials, stitching, handles, buckles.
- If the product shows signs of wear and tear, it must be removed from service immediately.



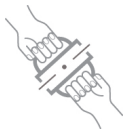
Visual inspection/Check the product:

Ensure that the materials, seams, stitching, handles, buckles are intact/faultless.



Stability test:

Try to bend the product verify that it feels firm, stable and solid.



Mechanical load or stress/Test handles:

Draw hard in the handles in opposite directions and control the material, seams and stitching.

Test buckles:

Lock the buckle and draw in opposite directions, control the buckle and the stitching.



Test low/high friction:

Place the product on a firm surface or a bed, place your hands on the material and test the friction by pushing your hands down into the product.
Low friction – slides effortlessly
High friction – no sliding/moving

Check:

Manual transfer aids with handles, straps and buckles:



Manual transfer aids with for sitting and lying transfer and with high or low friction:



Production year, month and day



The product can be scrapped in accordance with national regulations



Read the user manual