
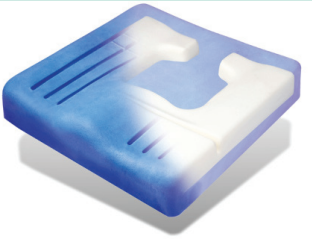




ViscoFlex® + Cushion

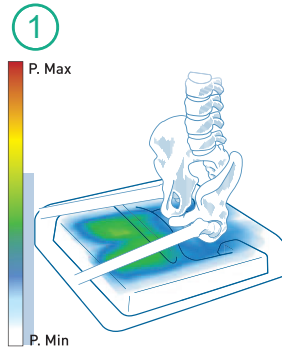
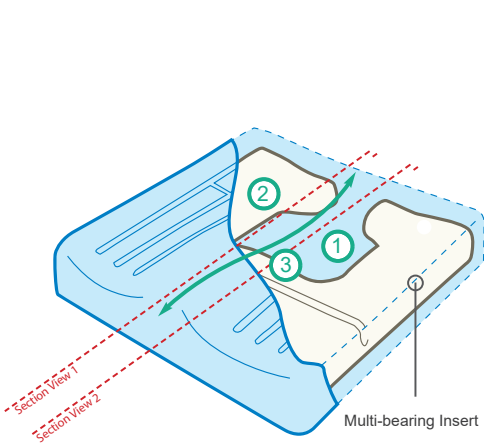
Viscoelastic foam with memory effect and an Ergonomic insert



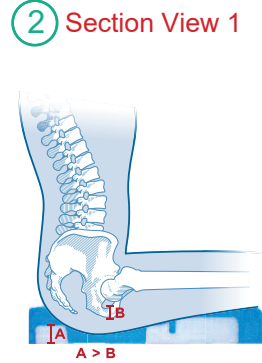
The **ViscoFlex® Cushion** is an anatomic moulded cushion made from viscoelastic foam with memory effect and an ergonomic insert which provides pressure reduction for those who are considered to be up to a very high risk of pressure ulcer development.

Features	Benefits
<p>Viscoelastic foam with memory effect</p>	<p>Viscoflex® was specifically designed for pressure ulcer prevention. Very high-density viscoelastic foam gives our Viscoflex® cushions better resistance to subsidence compared to industrial-type viscoelastic foams. The memory effect allows precise moulding of the body therefore provides better pressure distribution and facilitates blood circulation.</p> 
<p>The shape</p>	<p>An anatomical shape with raised lateral edges and a front to back slope combined with the mechanical properties of viscoelastic foam increases the contact surface which results in improved positioning, stability and comfort as the contact surface is increased.</p>
<p>The Insert</p>	<p>A high bearing capacity foam helps to structure the cushion and functions as a skeleton in order to set weight bearing capacities. The insert enables a controlled and stabilised immersion before reaching a bottoming limit.</p> 
<p>Multi-bearing Insert</p>	<p>Different bearing capacity in front-rear part of the insert in order to rebalance patients in a sitting position to help reduce pressure put on the users ischia.</p>
<p>The two cover options</p>	<p>A waterproof and vapour permeable POLYMAILLE® HD cover with welded seams promotes comfort whilst aiding infection control.</p>  <p>A removable orange and black POLYMAILLE® cover with an anti-slip base is manufactured from impermeable material which is permeable to steam and air. The cover reduces the effects of maceration through easing the skin respiration.</p> 

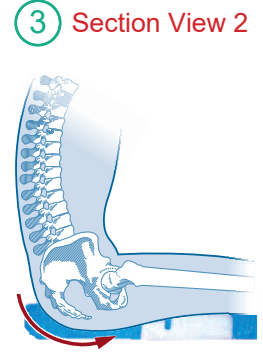
**If an orange and black POLYMAILLE® cover is required the letters OB must be added to the end of the UHC product code & the letters HW will replace the HF letters on the SYSTEM® product code*



1
Reduces the load on the risk zone Protects the sacrum and ischia which are considered to be risk zones. Provides partial relief of bony contours through immersion.



2 Section View 1
Anti-Puncturing System
 - Specifically positioned in relation to the ischia (B).
 - Distributes pressure to the buttock peripheral zone, stabilising pelvis immersion and preventing it from reaching the bottoming zone.



3 Section View 2
Pre-Ischial Ridge
 Blocks the ischia to preventing forward sliding.

***If an orange and black POLYMAILLE® cover is required the letters OB must be added to the end of the UHC product code & the letters HW will replace the HF letters on the SYST'AM® product code**

Technical Specification

UHC Product code	SYST'AM® Product code	Cushion Dimensions	Max User Weights	Cover Type
USYC71313OB	P361CA32321HW	32 x 32 x 10cm / 13 x 13 x 4"	50 kg / 8 stone	Orange & Black POLYMAILLE®
USYC71414OB	P361CA36361HW	36 x 36 x 10cm / 14 x 14 x 4"	50 kg / 8 stone	Orange & Black POLYMAILLE®
USYC71515OB	P361CA38381HW	38 x 38 x 10cm / 14 x 14 x 4"	90 kg / 14 stone	Orange & Black POLYMAILLE®
USYC71517OB	P361CA38431HW	38 x 43 x 10cm / 14 x 17 x 4"	90 kg / 14 stone	Orange & Black POLYMAILLE®
USYC71616OB	P361CA42421HW	42 x 42 x 10cm / 16½ x 16½ x 4"	100 kg / 16 stone	Orange & Black POLYMAILLE®
USYC71616	P361CA42421HF	42 x 42 x 10cm / 16½ x 16½ x 4"	100 kg / 16 stone	Blue POLYMAILLE® HD
USYC71618OB	P361CA42461HW	42 x 46 x 10cm / 16½ x 18 x 4"	100 kg / 16 stone	Orange & Black POLYMAILLE®
USYC71816OB	P361CA45421HW	45 x 42 x 10cm / 18 x 16½ x 4"	110 kg / 17 stone	Orange & Black POLYMAILLE®
USYC71816	P361CA45421HF	45 x 42 x 10cm / 18 x 16½ x 4"	110 kg / 17 stone	Blue POLYMAILLE® HD on special request
USYC71818OB	P361CA45461HW	45 x 46 x 10cm / 18 x 18 x 4"	130 kg / 20½ stone	Orange & Black POLYMAILLE®
USYC71818	P361CA45461HF	45 x 46 x 10cm / 18 x 18 x 4"	130 kg / 20½ stone	Blue POLYMAILLE® HD on special request
USYC71917OB	P361CA48431HW	48 x 43 x 10cm / 19 x 17 x 4"	140 kg / 22 stone	Orange & Black POLYMAILLE®
USYC71917	P361CA48431HF	48 x 43 x 10cm / 19 x 17 x 4"	140 kg / 22 stone	Blue POLYMAILLE® HD on special request
USYC72018OB	P361CA51461HW	51 x 46 x 10cm / 20 x 18 x 4"	150 kg / 23½ stone	Orange & Black POLYMAILLE®
USYC72018	P361CA51461HF	51 x 46 x 10cm / 20 x 18 x 4"	150 kg / 23½ stone	Blue POLYMAILLE® HD on special request
USYC72020OB	P361CA51501HW	51 x 51 x 10cm / 20 x 20 x 4"	160 kg / 25 stone	Orange & Black POLYMAILLE®
USYC72020	P361CA51501HF	51 x 51 x 10cm / 20 x 20 x 4"	160 kg / 25 stone	Blue POLYMAILLE® HD on special request
USYC72218OB	P361CA56461HW	56 x 46 x 10cm / 22 x 18 x 4"	230 kg / 36 stone	Orange & Black POLYMAILLE®
USYC72218	P361CA56461HF	56 x 46 x 10cm / 22 x 18 x 4"	230 kg / 36 stone	Blue POLYMAILLE® HD on special request
USYC72420OB	P361CA61501HW	61 x 50 x 10cm / 24 x 20 x 4"	270 kg / 42½ stone	Orange & Black POLYMAILLE®

Risk category: Up to very high

Warranty: 2 years

Cleaning of the cover:



Cleaning of foam:

Do not immerse in water

