

Disposal warning

1. When this crossed-out wheeled bin symbol is attached to a product, it means the product is covered by the European Directive 2012/19/EU.
2. All electrical and electronic products/battery should be disposed of separately from the municipal waste stream via designated collection facilities appointed by the government or the local authorities.
3. The correct disposal of your old appliance/battery will help prevent potential negative consequences for the environment and human health.



For more detailed information about disposal of your old appliance/battery, please Contact your city office, waste disposal service or the shop where you purchased the product.

2. SET UP THE TELEPHONE

2.1 Package Contents

The package contains the following items:

- Base station
- Corded handset
- Cordless handset
- Charger with an AC poweradapter
- AC power adapter (for base unit)
- NiMH rechargeable battery pack (for handset)
- Telephone line cord (for base unit)
- User's manual

2.2 Location

For maximum coverage and reduce the interference, here are some guidelines you should consider when you place the base unit,

- place it at a convenient, high, and central location with no obstructions between the handset and base unit in an indoor environment.
- place it away from electronic appliances such as televisions, microwave ovens, radios, personal computers, wireless devices or other cordless phones.
- avoid facing radio frequency transmitters, such as external antennas of mobile phone cell stations.
- avoid plugging it into the same circuit as other major household electrical appliances because of the potential for interference. Try moving the appliance or the base unit to another power outlet.

If the reception for a base unit location is not satisfactory, move it to another location for better reception.

Depending on the surrounding conditions as well as spatial and structural factors, the range may be reduced. The range indoors is normally less than outdoors.

2.3 Connect the Corded Base Station

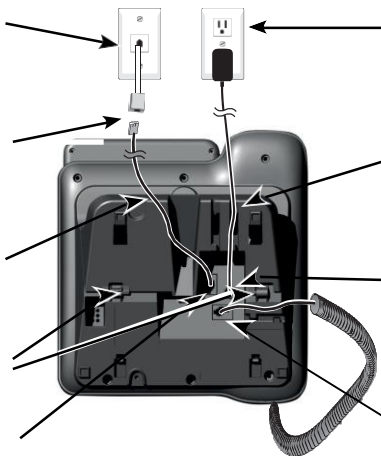
Plug one end of the telephone line cord into a telephone jack or a DSL filter.

If you have DSL high-speed Internet service, a DSL filter (not included) is required.

Route the telephone line cord through this slot.

Click the wall mount bracket securely into the mounting slots for tabletop use.

Plug the other end of the telephone line cord into the telephone jack on the back of the telephone base.



Plug the large end of the telephone base power adapter into a power outlet.

Route the power adapter cord through this slot.

Plug the small end of the telephone base power adapter into the power adapter jack on the back of the telephone base.

Plug the corded handset cord into the corded handset jack on the back of the telephone base.

NOTE

- Use only the power adapter supplied with the base station.



Plug the power adapter into a power outlet.

2.4 Install and Charge the Handset Battery



1. Plug the battery connector securely into the socket inside the handset battery compartment. Insert the supplied battery as indicated.



2. Align the cover flat against the battery compartment, and then slide it upwards until it clicks into place.



3. Charge the handset by placing it face forward in the charger. You hear a beep when the handset is charging in the charger.

NOTES

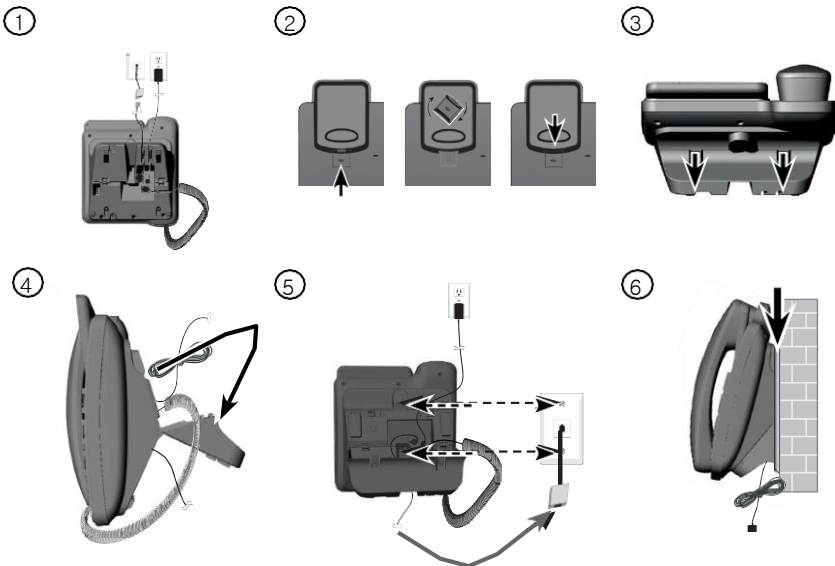
- Use only the supplied NiMH rechargeable battery pack.
- If you do not use the handset for a long time, disconnect and remove the battery to prevent possible leakage.

2.5 Base Station Installation options

Your telephone base is ready for tabletop use. If you want to mount your telephone on a wall, follow the steps to connect the telephone base with a standard dual-stud telephone wall mounting plate. You may need a professional to install the mounting plate.

2.5.1 Tabletop to Wall Mount Installation

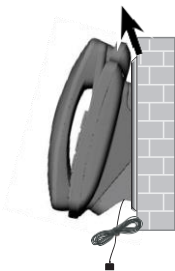
1. Unplug the power adapter from the power outlet. Unplug the telephone line cord from the wall jack (or DSL filter).
2. Put the corded handset aside. Hold down the switch hook on the telephone base, and then slide the handset tab upwards to remove it from the slot. Rotate the handset tab by 180 degrees. Then, replace the handset tab into the slot until it locks into position.
3. Press down on the tabs of the wall mount bracket to release it from tabletop orientation.
4. Rotate the wall mount bracket down and push it into the telephone base until it clicks into place.
5. Plug the telephone line cord (or DSL filter) into the wall jack. Plug the power adapter into a power outlet. Align the slots on the back of the telephone base with the studs of the wall mounting plate.
6. Slide the telephone base down until it locks securely. Bundle the telephone line cord and power adapter cord neatly with twist ties.



252 Wall Mount to Tabletop Installation

1. Unplug the power adapter from the power outlet. Unplug the telephone line cord from the wall jack (or DSL filter). If the telephone line cord and power adapter cord are bundled, untie them first. Push the telephone base up to remove it from wall.
2. Put the corded handset aside. Hold down the switch hook on the telephone base, and then slide the handset tab upwards to remove it from the slot. Rotate the handset tab by 180 degrees. Then, replace the handset tab into the slot until it locks into position.
3. Gently pull upward to release the wall mount bracket. Rotate the wall mount bracket up to tabletop position and push it into the telephone base until it clicks into place.
4. Plug the telephone line cord (or DSL filter) into the wall jack. Plug the power adapter into an power outlet. Bundle the telephone line cord and power adapter cord neatly with twist ties if necessary.

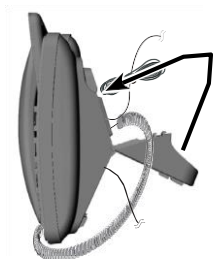
①



②



③



④

